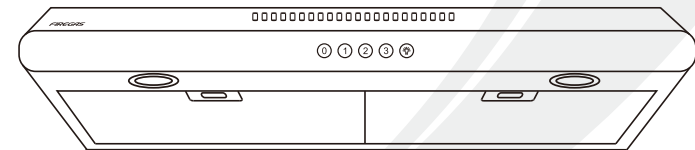


FIREGAS

INSTALLATION AND USER'S MANUAL

FIREGAS

Thanks for reading.
We wish you a lot of fun cooking



FGS-USF22A75AC
FGS-USF22A90AC

IMPORTANT NOTICE:
Read and save these instructions.
Installer: Leave this guide with the homeowner.
Homeowner: Keep this guide for future reference.



www.firegaskitchen.com

NOTE:

You can also watch the installation video from **Support > Installation Guide** by visiting our website: www.firegaskitchen.com
We will update at any time, please visit the website for more information.

CONTENT

Introduction..... 2
Safety Precaution 2
Parts Diagram 3-4
Installation Instructions 4-5
Air Outlet Installation Method..... 6
Installation 6-8
Operation 8
Maintenance 9-10
Trouble-Shooting 11
Environmental Protection..... 11

Introduction

Thank you for choosing this cooker hood.

- This instruction manual is designed to provide you with all required instructions related to the installation, use and maintenance of the appliance.
- In order to operate the unit correctly and safely, please read this instruction manual carefully before installation and usage.

Safety Precaution

- Never let the children operate the machine.
- The cooker hood is for home use only, not suitable for barbecue, roast shop and other commercial purpose.
- Clean the cooker hood according to the instruction manual and keep the unit from danger of burning. There is a fire risk if cleaning is not carried out in accordance with the instructions.
- Please keep the kitchen room a good convection before connecting this appliance; Please check that the power supply cord is undamaged. A damaged supply cord must be replaced by qualified service personnel only.
- Regulations concerning the discharge of air have to be fulfilled.
- This appliance can be used by children aged from 8 years and above also the persons with reduced physical, sensory or mental capabilities or lack of experience and knowledge if they have been given supervision or instruction concerning use of the appliance in a safe way and understand the hazards involved. Children shall not play with the appliance. Cleaning and user maintenance shall not be made by children without supervision.
- If the supply cord is damaged, it must be replaced by the manufacturer, its service agent or similarly qualified persons in order to avoid a hazard.

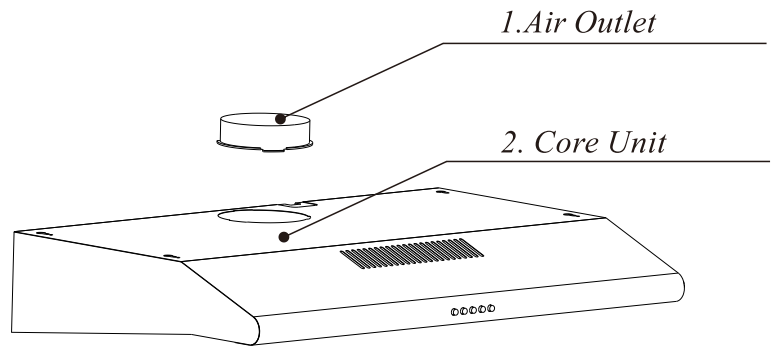
⚠ CAUTION:

Accessible parts may become hot when used with cooking appliance.

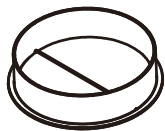
Electrical Shock Hazard

Only plug this unit into a properly earthed outlet.
If you have doubts, seek advice from a suitably qualified engineer.

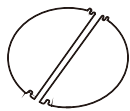
Parts Diagram



Parts Supplied



Air Outlet



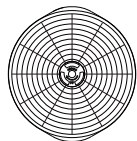
Dampers



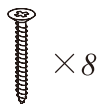
Vent Cover



Square to round outlet adaptor

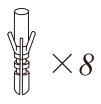


Charcoal Filters
(Please refer to the model list on the last page)



×8

St4×30



×8

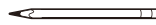
φ5×φ8



×6

St4×6

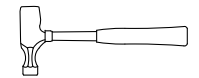
Tools Required



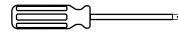
Pencil



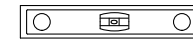
Measuring tape



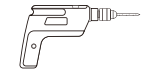
Hammer



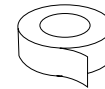
Screwdriver



Level



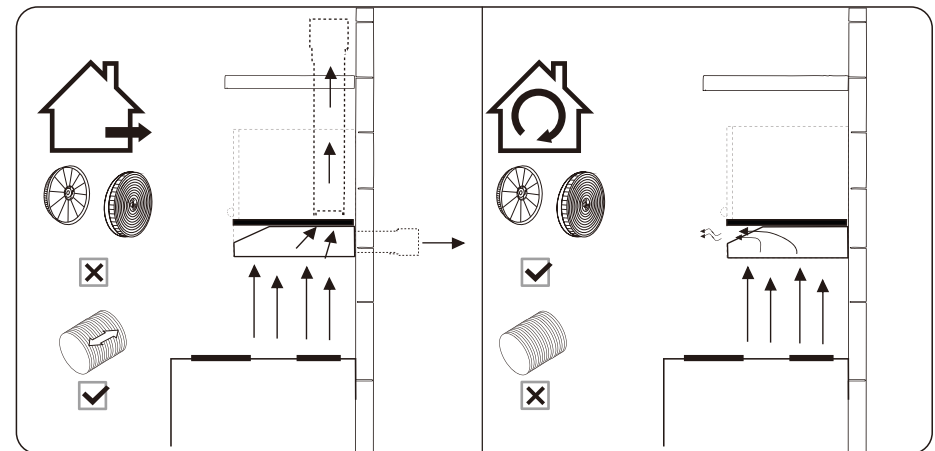
Electric drill



Duct Tape

Installation Instructions

Prepare for installation:

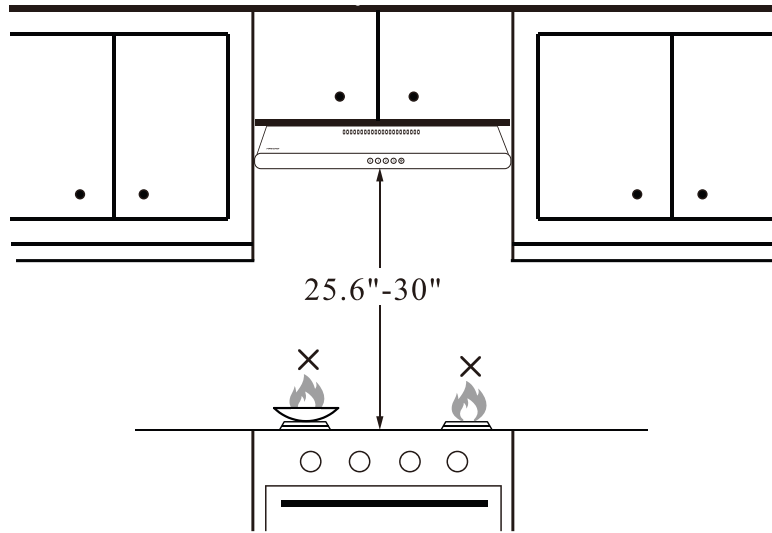


DUCTED OPTION

RECIRCULATION OPTION

If you have an outlet to the outside, your cooker hood can be connected as above picture by means of a pipe (with an interior diameter of 120mm). If you don't have an outlet to the outside, you can go with recirculation mode by using charcoal filter.

Installation Requirements

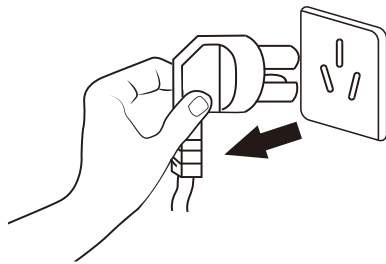


The cooker hood should be placed at a distance of 25.6"~30" above the cooktop for the best effect.



Note

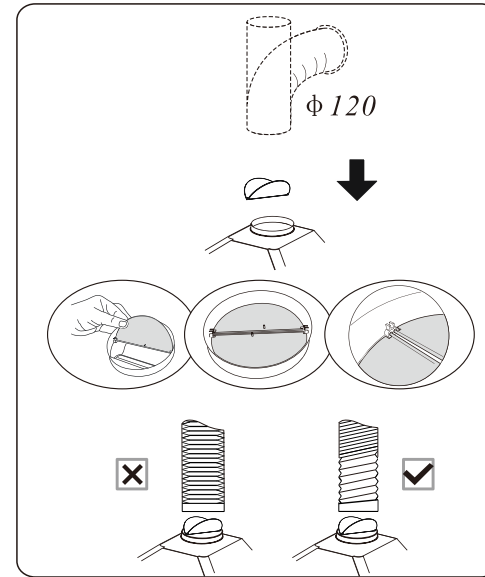
No open flames directly approach to the range hood.



Before installation, turn the unit off and unplug it from the outlet.

Note: The power cord is 44 in(L) . It is not recommended that user replace the power cord or cut the power cord.

Air Outlet Installation Method



Installation method for 120mm diameter pipe: insert the one-way-value as the pic and fix the duct.

Attention: The bump of the one-way-value must be upward.

The pipe near the air outlet need to be fully extended.

Installation



Note

Please connect the power supply to test and confirm that the power is on before installing this under cabinet range hood.

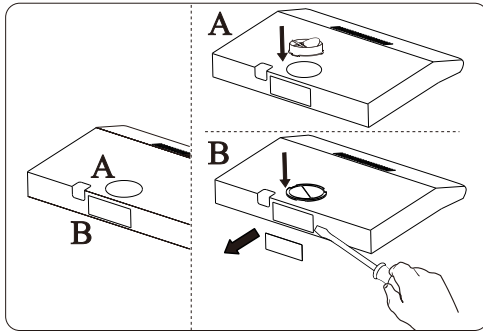
(1) Watch the installation video:



In order to know how to install this under cabinet range hood more intuitively, please scan the QR code to watch the installation video.

(2) Refer to the installation instructions:

Two methods of ventilation (A&B)

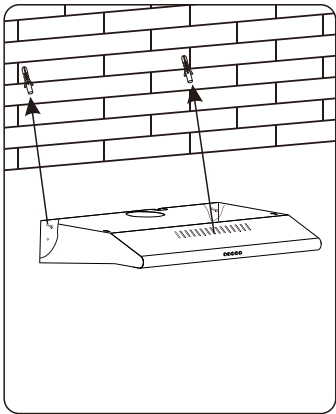


Vertical ventilation:

Method A: connect the 120mm air outlet to the top vent of slim hood.

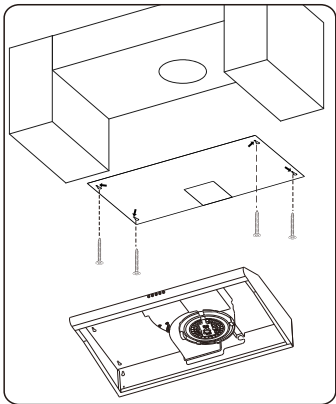
Method B: cover the top vent of slim hood with outlet cover provided and remove the back square metal plate with tool.

Two ways for installation(A&B)



Way A (Wall mounted):

According to the center distance of hole in the back of the slim hood, measure the position and then drill 2pcs Ø8mm holes on the wall. Insert the plastic wall anchors into each holes and tighten 2pcs ST4x30 screws into the plastic wall anchors. Place the slim hood onto the tighten screws. Fix the cooker hood with safety screw. The two safety screw vents are positioned on the back casing, with diameter of 6mm. Put the one-way-valve onto the hood to finish installation.

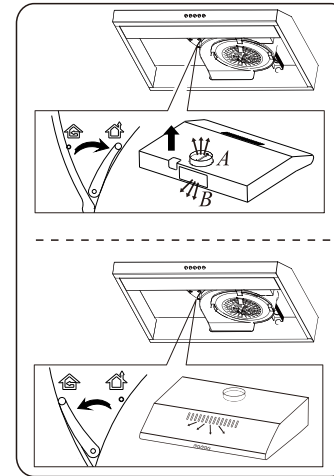


1. Stick the installation paper on the bottom of cabinet.
2. Drill 4 holes according to the paper showed. (If you need top vent, cut a square hole according to the paper showed.)
3. Remove the installation diagram after drilling the holes.
4. Insert the plastic wall anchors into each holes and tighten ST4x30 screws into the plastic wall anchors.



Note

1. The extensible pipe are optional accessory, not supplied.
2. Take off protection film before installation.
3. There are 2 methods for ventilation, including horizontal ventilation and vertical ventilation. Please pay attention to the ventilation method when installation.

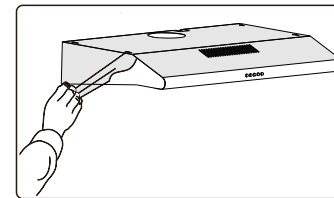


Air ventilation setting

Outdoor exhausting: Turn the adjuster to outdoor position, install the outlet, turn on the cooker hood, then the air will be vented from the outside outlet.

Recycling: The recycling mode with carbon filter; Turn the adjuster to indoor position, install the outlet cover, turn on the cooker hood, then the air can be vented from the inside outlet.

⚠ WARNING: The charcoal cannot be washed or recycled. It should be changed at most after 120 hours using. The carbon filter shouldn't be exposed to heat.



CAUTION:

BEFORE USE

Please remove the white/blue protective film on the rangehood.

Operation

Push Button



- ① **OFF button**
Turn off the fan.
- ① **Low Speed button**
Starts the fan at low speed.
It is suitable for simmering and cooking which does not make much steam.
- ② **Medium Speed button**
Starts the fan at medium speed.
This is ideal for ventilation during standard cooking operation.
- ③ **High Speed button**
Starts the fan at high speed.
This is ideal for when a high density of smoke or steam has been produced.
- ☀ **Light button**
Used for turning on/off the light.

Maintenance

Before cleaning switch the unit off and pull out the plug.

I. Regular Cleaning

Use a soft cloth moistened with hand-warm mildly soapy water or household cleaning detergent. Never use metal pads, chemical, abrasive material or stiff brush to clean the unit.

II. LED Light Replacement

Switch the unit off and unplug the appliance.

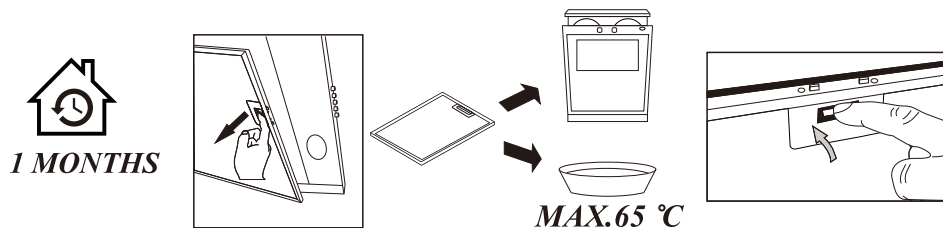
CAUTION: LAMP UNIT MAY BE HOT!

WAIT UNTIL THE UNIT IS COOL. BEFORE attempting to replace the LED lamps make sure the unit is powered off and UNPLUGGED.



III. Filter and charcoal filters replacement

In order to install the carbon filter, the grease filter should be detached first. Press the lock and pull it downward.

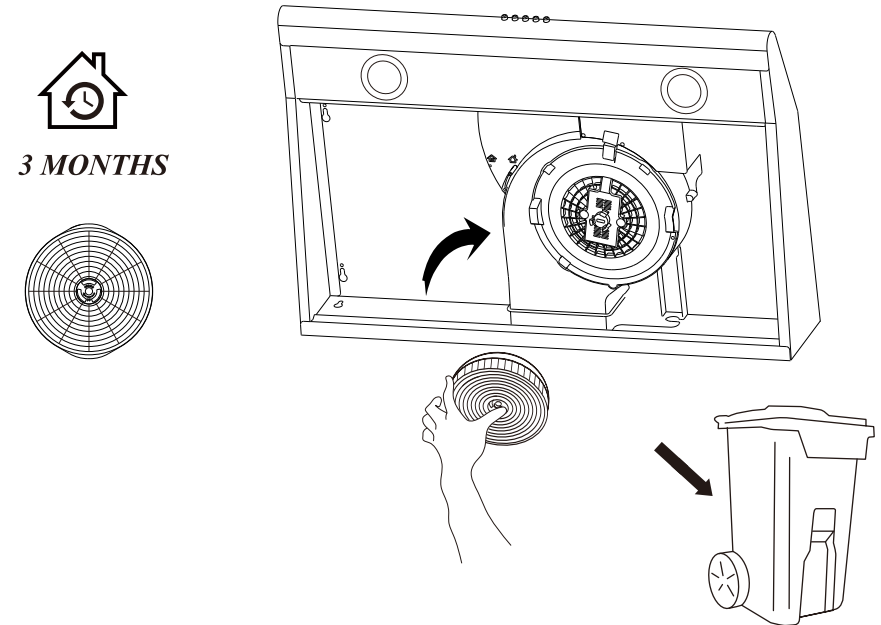


Filters: To avoid fires, clean thoroughly once a month or whenever the display pilot lights up (if fitted). To do so, remove the filters and soak in hot water and detergent for an hour. If using a dishwasher, position the filters vertically to improve the cleaning process.

VI. Charcoal filter life time: Suggest changing to new one every 3 months (According to different kitchen condition, the life time of charcoal filter might be longer or shorter than 3 months).

Installation:

1. Remove the Aluminum Filters.
2. The charcoal filter is installed to the motor housing as shown. Line up the filter over the center of the motor housing, then turn the filter until the side tabs fit into slots and locks in place.



Important Notice:

1. Make sure the filter is securely locked. Otherwise, it would loosen and cause abnormal noise and danger.
2. Using charcoal filter would reduce the air flow of the range hood.

Trouble-Shooting

Fault	Cause	Solution
<i>Light on, but fan does not work</i>	<i>The fan blade is jammed.</i>	<i>Switch off the unit and repair by qualified service personnel only.</i>
	<i>The motor is damaged.</i>	
<i>Both light and fan do not work</i>	<i>Light is burnt out.</i>	<i>Replace the LED light with correct rating.</i>
	<i>Power cord is loose.</i>	<i>Plug into the power supply again.</i>
<i>Serious Vibration of the unit</i>	<i>The fan blade is damaged.</i>	<i>Switch off the unit and repair by qualified service personnel only.</i>
	<i>The fan motor is not fixed tightly.</i>	
	<i>The unit is not hung properly on the bracket.</i>	<i>Take down the unit and check whether the bracket is in proper location.</i>
<i>Suction performance not good</i>	<i>Too far distance between the unit and the cooktop.</i>	<i>Readjust the distance between 25.6"-30"</i>

Environmental Protection

Waste electrical products should not be disposed of with household waste. Please recycle where facilities exist. Check with your Local Authority or retailer for recycling advice.



FIREGAS

Skype: FiregasKitchenAppliances
Facebook: FiregasKitchenAppliances
Instagram: FiregasKitchenAppliances
E-mail: support01@zsfiregas.com



FIREGAS
CUSTOMER CARE

WhatsApp: +86 13392595667

Warranty Card

Please fill out the form below if you are submitting this registration card by fax, email or post / mail

Product	Model
Sr. No. of Product	
Cash memo no./ Date of Sale	
Name & Address / Stamp of Dealer	
Signature of Dealer	

NOTE

For easier reference, please present Original Sales Invoice or Official Receipt when claiming warranty.

The Manufacturer and/or Exclusive Distributor has the sole discretion in determining the cause of defects.

Model List

<i>Range Hood Model No.</i>	<i>Charcoal Filter Model No.:</i>
<i>FGS-USF22A75AC</i> <i>FGS-USF22A90AC</i>	<i>CC170</i>